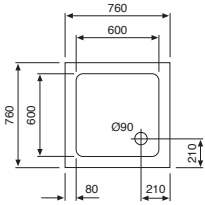
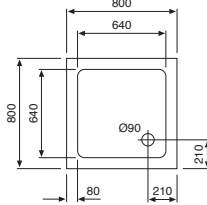


Square / Rectangular

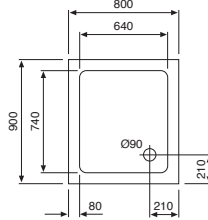
760 x 760mm
Code: T01



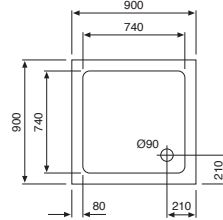
800 x 800mm
Code: T02



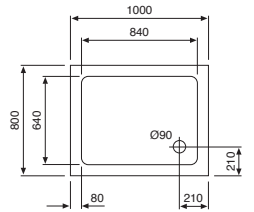
900 x 800mm
Code: T22



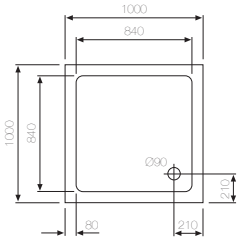
900 x 900mm
Code: T03



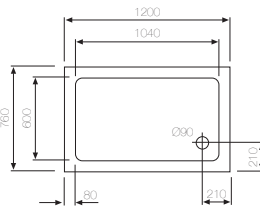
1000 x 800mm
Code: T23



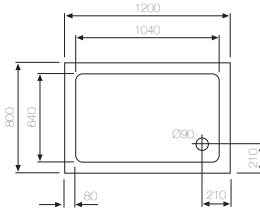
1000 x 1000mm
Code: T04



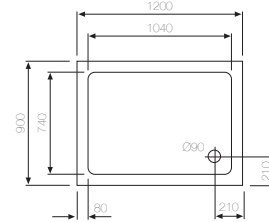
1200 x 760mm
Code: T05



1200 x 800mm
Code: T06

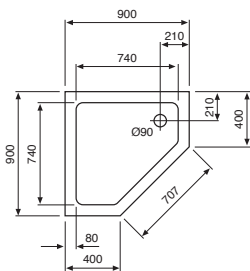


1200 x 900mm
Code: T07

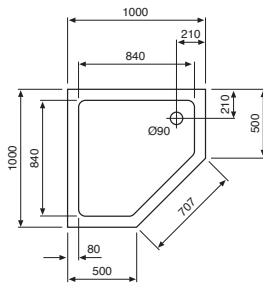


Pentagon

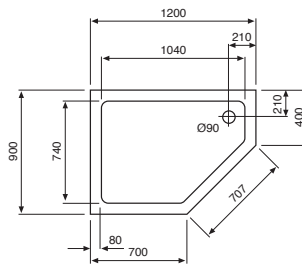
900 x 900mm
Code: T10



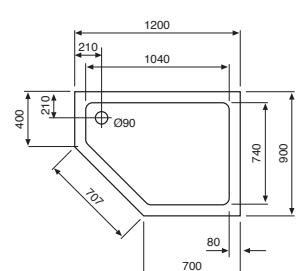
1000 x 1000mm
Code: T11



1200 x 900mm LH
Code: T13

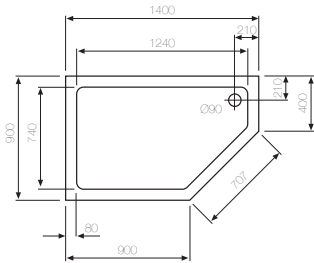


1200 x 900mm RH
Code: T12

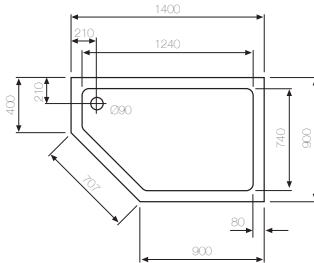


Pentagon

1400 x 900mm LH
Code: T15

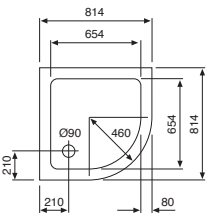


1400 x 900mm RH
Code: T14

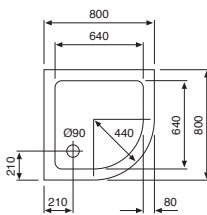


Quadrant

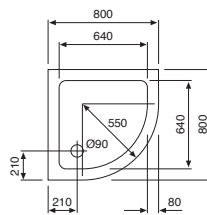
800 x 800mm D
Code: T17



800 x 800mm S
Code: T18



800 x 800mm U
Code: T19

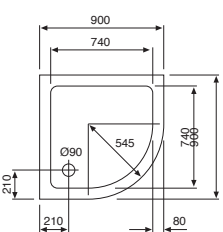


Special Features

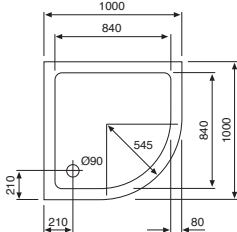
- Totally rigid, quality acrylic tray that will not flex, move or leak
- Uniquely positioned adjustable foot system
- Easy to install panel fixing mechanism
- Superb high gloss finish that with proper care will not dull or craze
- Lifetime guarantee against manufacturing defects
- Revolutionary tiling upstand
- All include c.p. or white, easy clean waste
- Front positioning of waste for easy access

UK Patent Number GB2356808

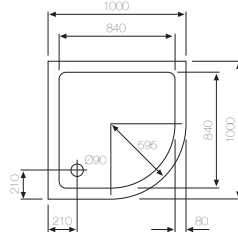
900 x 900mm
Code: T08



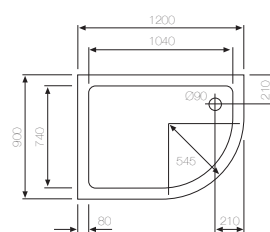
1000 x 1000mm D
Code: T09



1000 x 1000mm S
Code: T16



1200 x 900mm LH
Code: T21



1200 x 900mm RH
Code: T20

